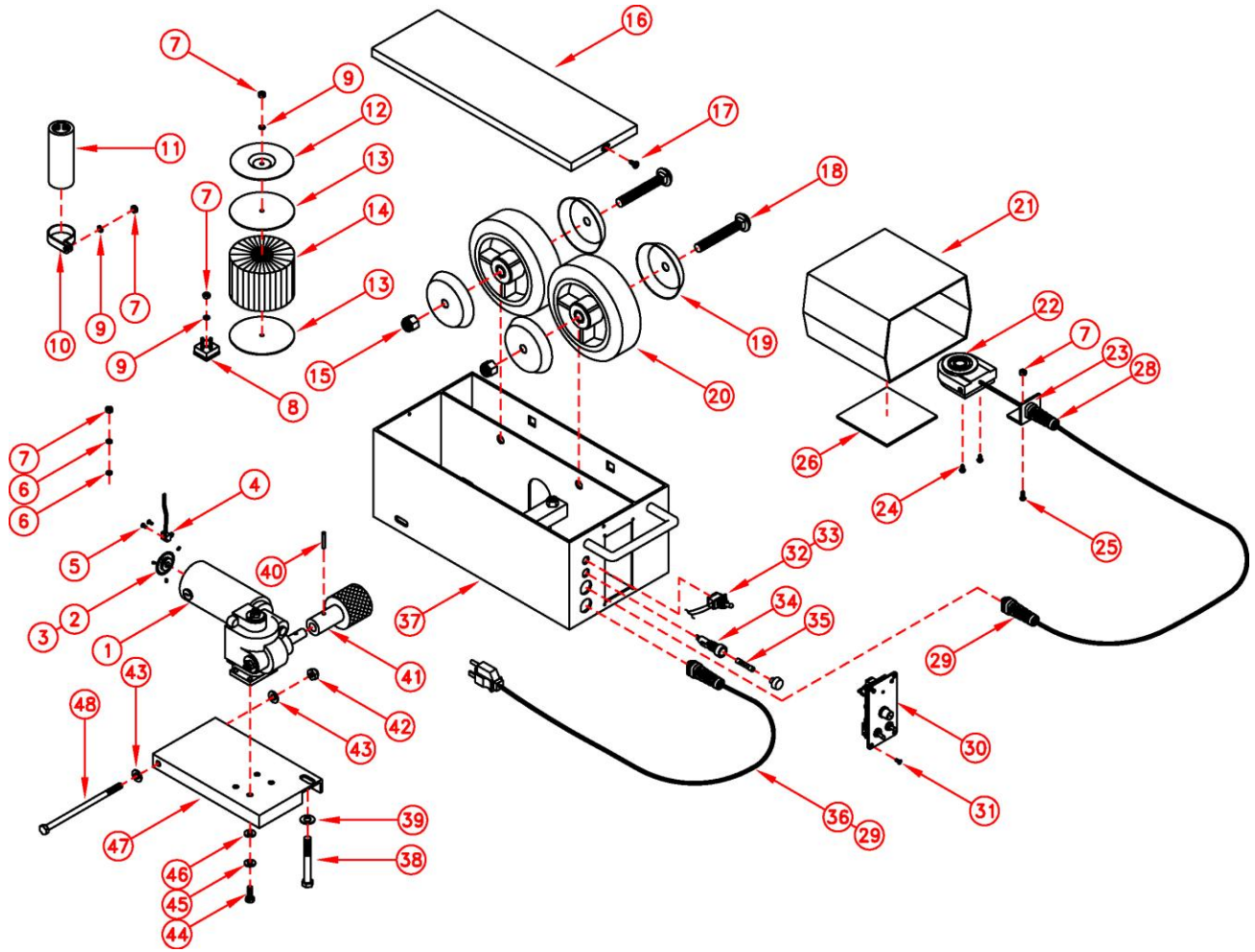


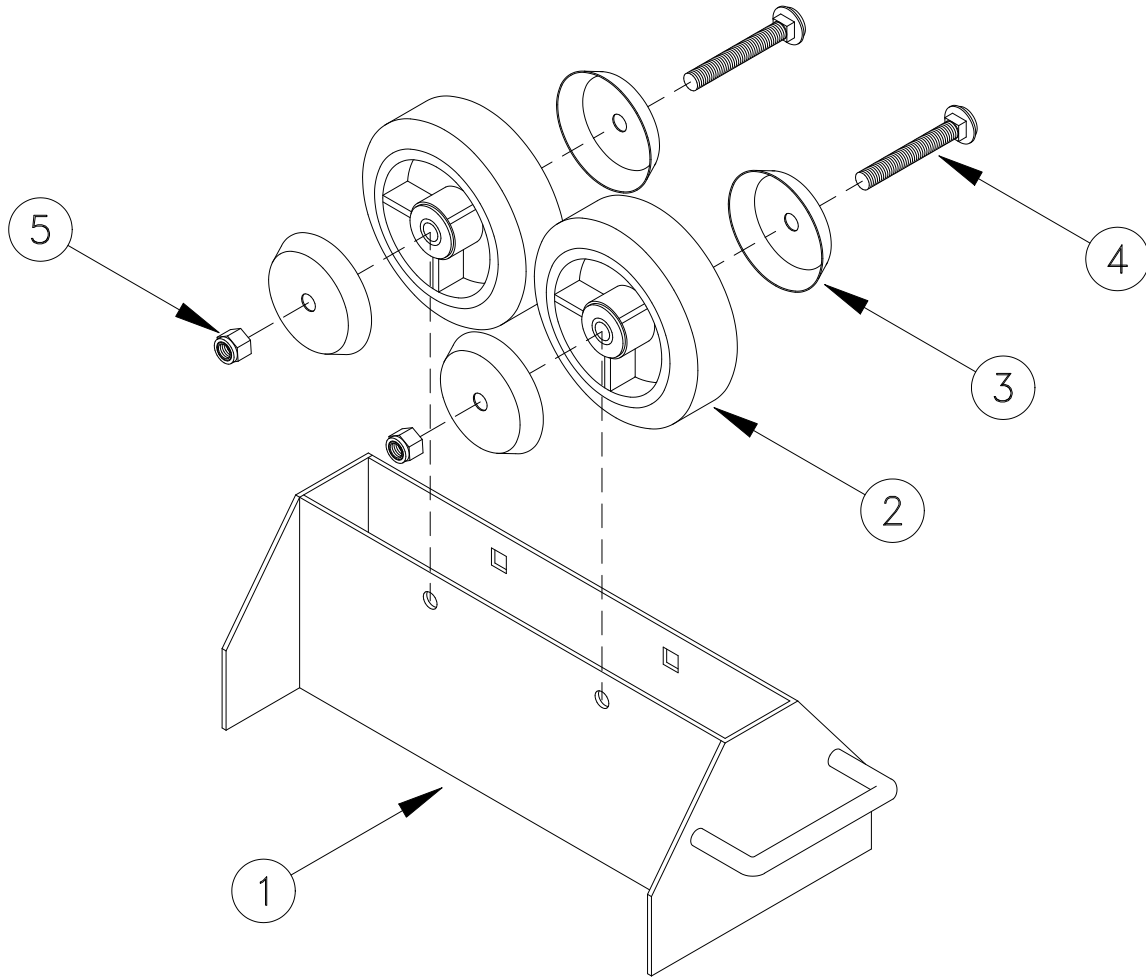
## "KAMEL" ROLL PARTS BREAKDOWN - DRAWING KR-200

ITEM	PART No.	DESCRIPTION	QTY.
1	KR-191-P-271	MOTOR & GEARHEAD (1 - 35 IPM)	1
	KR-191-P-133	MOTOR & GEARHEAD (2 - 70 IPM)	
2	GK-191-P-038	SENSOR WHEEL	1
3	GK-106-063	4-40 x 3/16" SET SCREW	3
4	GK-191-P-035	SENSOR ASSEMBLY	1
5	GK-112-060	4-40 x 1/4" ROUND HEAD SCREW	2
6	GK-129-012	# 10 INTERNAL STAR LOCK WASHER	3
7	GK-135-057	10-32 LOCK NUT	5
8	GK-191-P-020	BRIDGE RECTIFIER	1
9	GK-111-068	# 10 FLAT WASHER	3
10	GK-191-P-063	CAPACITOR CLAMP	1
11	GK-191-P-062	CAPACITOR	1
12	GK-191-P-105	TRANSFORMER MOUNTING PLATE	1
13	GK-191-P-218	TRANSFORMER MOUNTING RUBBERS	2
14	GK-191-P-019-A	TRANSFORMER - 42 VOLT INPUT	1
	GK-191-P-019-B	TRANSFORMER - 115 VOLT INPUT	
	GK-191-P-019-C	TRANSFORMER - 230 VOLT INPUT	
15	GK-135-055	1/2"-13 LOCK NUT	2
16	KR-190-114	LID	1
17	GK-112-089	8-32 x 1/4" ROUND HEAD SCREW	2
18	GK-160-002	1/2"-13 x 3-1/2" CARRIAGE BOLT	2
19	KR-179-106	WHEEL HUB COVERS	4
20	KR-179-104	6" [15.2 cm] DIAMETER RUBBER TIERED WHEEL	2
	GP-200-024	RUN/STOP FOOTSWITCH ASSEMBLY (Items 21 to 28 + 1 x items 7 & 29)	1
21	KR-179-113	FOOT SWITCH COVER	1
22	KR-179-122	FOOT SWITCH	1
23	KR-190-112	CABLE STRAIN BRACKET	1
24	GK-125-055	# 8 x 3/8" SELF TAPPING SCREW	2
25	GK-112-065	10-32 x 3/8" ROUND HEAD SCREW	2
26	KR-179-115	FOOT SWITCH COVER ANTI-SLIP PAD	1
28	GK-148-014	STRAIN RELIEF BUSHING	1
29	GK-148-015	7/8" STRAIN RELIEF BUSHING	2
30	GSP-1000	GSP-1000 CONTROL ASSEMBLY	1
31	GK-141-014	6-32 x 5/16" FLAT HEAD SCREW	4
32	GK-191-P-022	POWER ON/OFF SWITCH	1
33	GK-191-P-050	POWER ON/OFF NAMEPLATE	1
34	GK-165-134	FUSE HOLDER	1
35	GK-165-098	5 AMP SLOW BLOW FUSE (42 VOLT INPUT)	1
	GK-165-099	2.5 AMP SLOW BLOW FUSE (115 VOLT INPUT)	
	GK-165-097	1.25 AMP SLOW BLOW FUSE (230 VOLT INPUT)	
36	GK-171-032	POWER CORD (Specify voltage) (Not always supplied with plug)	1
37	KR-190-108	FRAME	1
38	GK-108-089	3/8"-24 x 3" HEX BOLT	1
39	GK-111-058	3/8" FLAT WASHER	1
40	GK-117-026	3/16"Ø x 1" SPRING PIN	1
41	KR-179-102	KNURLED DRIVE WHEEL	1
42	GK-135-050	5/16"-18 LOCK NUT	1
43	GK-111-054	5/16" FLAT WASHER	2
44	GK-108-050	1/4"-20 x 5/8" HEX BOLT	4
45	GK-136-053	1/4" SPLIT LOCK WASHER	4
46	GK-111-051	1/4" FLAT WASHER	4
47	KR-190-109	MOTOR MOUNTING PLATE	1
48	GK-108-090	5/16"-18 x 6" HEX BOLT	1
49	GK-191-P-128	POWER CORD INTERFACE WIRING HARNESS (Not shown on drawing)	1
50	GK-190-P-140	DC SUPPLY WIRING HARNESS (Not shown on drawing)	1
51	GK-191-P-103	DISCHARGE RESISTOR WIRING HARNESS (Not shown on drawing)	1
52	GK-191-P-127	HIGH FREQUENCY CAPACITOR HARNESS (Not shown on drawing)	1
53	KR-190-040	SENSOR EXTENSION WIRING HARNESS (Not shown on drawing)	1
54	KR-190-041	MOTOR EXTENSION WIRING HARNESS (Not shown on drawing)	1

# "KAMEL" ROLL PARTS BREAKDOWN - DRAWING KR-200



**"KAMEL" IDLER ROLL PARTS BREAKDOWN**  
**PART NUMBER KR-750**



ITEM	PART No.	DESCRIPTION	QTY.
1	KR-179-112	IDLER FRAME	1
2	KR-179-104	6" [15.2 cm] DIAMETER RUBBER TIRED WHEEL	2
3	KR-179-106	WHEEL HUB COVERS	4
4	GK-160-002	1/2"-13 x 3-1/2" CARRIAGE BOLT	2
5	GK-135-055	1/2"-13 LOCK NUT	2